



VERIQA

Implementation and
Clinical Adoption Support
for Every User

VERIQA

Benefit from comprehensive support



VERIQA is a modular and scalable patient QA platform designed to be tailored to the unique needs of its users. It features high-quality tools that achieve optimal performance when configured to match the specific requirements of individual customers. This flexibility ensures seamless integration and efficient operation within different workflows. The VERIQA platform also features customization capabilities, facilitating

the selection and implementation of modules and features to optimize functionality and effectiveness. To ensure the swift and smooth clinical integration of every VERIQA installation, PTW provides expert-led implementation and commissioning to achieve optimal results. Comprehensive support ensures that all tools and features are aligned with individual operational goals, maximizing VERIQA's potential.

Reliability

Our experienced team supports your product, from initial planning through to execution and beyond, while offering expert knowledge to address any challenge. We are committed to helping you achieve your goals and meet your expectations by providing reliable service and support. Your success is our success and we aim to deliver results reflecting our commitment to reliability.

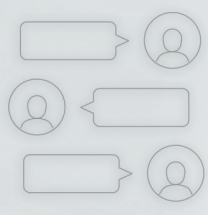
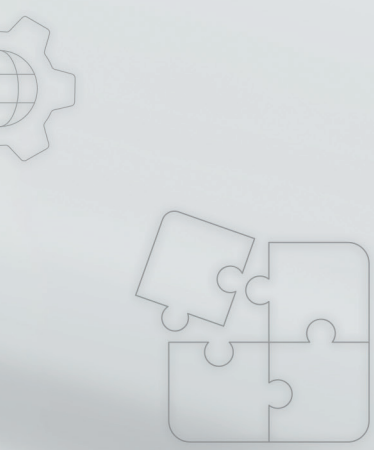
Clarity

We aim to ensure a smooth implementation process, allowing you to focus on your core activities without distraction. Our experts work to streamline every aspect of implementation, ensuring your IT team has the tools and knowledge required for a smooth transition. We also provide guidance for your physics teams, helping them understand workflows, algorithms, and implementation details. This ensures all parties involved are prepared and aligned, avoiding miscommunication and improving overall efficiency. By managing these aspects effectively, we aim to deliver an implementation that addresses your needs while keeping your resources focused on what matters most.

Quality

Our experienced team has conducted numerous VERIQA installations and works to achieve optimal results for each project. We have a specialized beam modeling team that upholds high standards in beam modeling for VERIQA systems worldwide, ensuring every model is created with accuracy for reliable results. We are equipped to swiftly address technical inquiries and clinical questions, helping you make informed decisions. By leveraging our experience and expertise, we are committed to delivering quality throughout your VERIQA implementation.

Make it a Success.



Ready.

Proactive Customer Support

Dedicated forward thinking assistance to anticipate issues ahead of time.

Set.

Competent Base Data Collection Support

Obtain expert assistance in gathering essential base data, ensuring consistent and reliable datasets.

Go.

Team-Training with flexible Training Options

Ensure your team has the necessary skills and knowledge with training from seasoned experts. Choose training to fit your team's schedule and preferences.

Succeed.

Expert Guidance for Clinical Adoption

Continuous support and expert guidance during the clinical adoption process.

Single Point of Contact

Streamlined planning and support through a dedicated contact, ensuring efficient communication.

Expert Monte Carlo Beam Model Creation

Benefit from accurate and high-quality beam models created by our specialized team.

Additional Follow-Ups

Access expert feedback to reinforce understanding and address outstanding questions.

Clinical and Physics Support

Offer qualified assistance for clinical and physics-related questions throughout the product lifecycle.

Comprehensive IT Assistance

Guidance on server planning, infrastructure development, and technical inquiries.

EPID Model Commissioning and Validation Assistance

Expert EPID calibration, commissioning and system validation assistance, ensuring accuracy and optimal performance.

Comprehensive Knowledge Base

Ensure your team learns how to utilize VERIQA to its full potential and drive optimal results.

Continuous Training and Education

Access regular training content and webinars to keep the clinical team informed about new features and best practices.

Installation and Configuration Support

Installation assistance, system setup, and verification of communication between the software and clinical systems, ensuring smooth operation.

Software and Workflow Configuration

Receive support in software setup and optimization to enhance efficiency and streamline operations.

Seamless Clinical Integration

Dedicated onboarding and assistance to facilitate smooth implementation.

Innovative Solutions

Constantly adapt and improve your system based on new VERIQA developments covering your needs.



Making Radiation Safer.

PTW is a global market leader for dosimetry and quality control solutions in radiation medicine, serving the needs of medical radiation experts in more than 160 countries worldwide. Starting with the famous Hammer dosemeter in 1922, the German manufacturer is the pioneer in medical radiation measurement, known for its unparalleled quality and precision.

For PTW, making medical radiation safer is both a passion and lifetime commitment. The family-run, high-tech company operates the oldest and largest accredited calibration laboratory in the field of ionizing radiation and established THE DOSIMETRY SCHOOL to globally promote the exchange of knowledge in clinical dosimetry.

PTW Freiburg GmbH
Lörracher Str. 7
79115 Freiburg · Germany
Phone +49 761 49055-0
Fax +49 761 49055-70
info@ptwdosimetry.com

ptwdosimetry.com

© PTW. All Rights Reserved. Specifications subject to change without prior notice.
All trademarks mentioned in this document are the property of their respective owners.
D952.139.09/00 2024-11

 **PTW**
THE
DOSIMETRY
COMPANY